

## Egg Packaging Protocol

**Goal:** Suspend real HOSP eggs in plastic Easter eggs using layers of Press'n Seal.

**Materials Needed:**

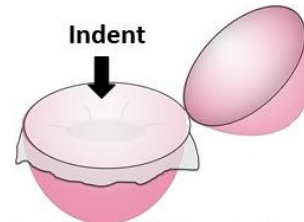
- Plastic Easter eggs
- Egg carton
- Paper towel
- Press'n Seal
- Scissors
- Masking tape
- Pen or marker
- Box
- Cushioning materials

**1**



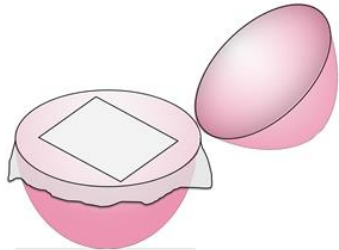
Let eggs sit a room temp. for an hour. Wipe off any condensation

**2**



Spread layer of Press'n Seal. Create an indent to hold the egg.

**3**



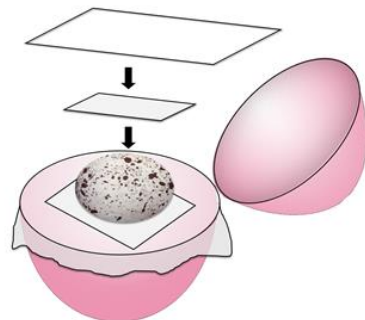
Place a square of paper towel

**4**



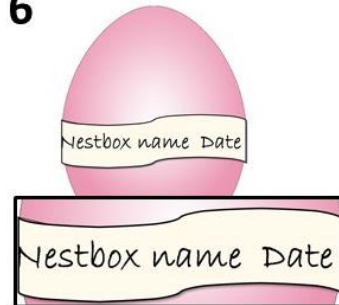
Gently place HOSP egg on top  
Tip: Use egg carton to steady egg.

**5**



Gently repeat with another layer of paper towel & Press'n Seal

**6**



Close & tape egg shut. Label nestbox name and collection date.

**7** Place labeled eggs into egg cartons. Place filled cartons, data sheets, and replicas (if applicable) into a box with enough room to add cushioning material. Fill all empty space with cushioning material such as newspaper and/or bubble wrap to secure the cartons.

Ship box to the museum at:

**Caren Cooper**  
**ATTN: Sparrow Swap**  
**North Carolina Museum of Natural Sciences**  
**11 West Jones St.**  
**Raleigh, NC 27601-1029**